

SPICE CHEST

Fabrics by Jo Morton



Quilt size: 60" x 60"

EXTRA SPICY QUILT

Featuring Spice Chest and
Attic Shirtings by Jo Morton

Designed and made by: Candy Hargrove

Machine quilted by: Maggi Honeyman



makower uk®

1384 Broadway
New York, NY 10018
(800) 223-5678

www.andoverfabrics.com

Extra Spicy Quilt

*Using Spice Chest and Attic Shirtings by Jo Morton for Andover Fabrics
Quilt designed and made by Candy Hargrove
Quilt machine quilted by Maggi Honeyman*

Quilt finishes 60" x 60"
12 pieced blocks 8" x 8"
36 Flying Geese border blocks 3" x 6"

This quilt's classic style recalls the long-ago time when both spices and fabric scraps were very precious. When combined with simple shirting fabrics, the rich, earthy colors really pack a punch. For this controlled scrappy look, make each block form a pair of light and dark prints.

Fabric Requirements

Spice Chest

Blocks fat ¼ each: 5078-R
5080-R
5081-R

Blocks fat ⅛ each: 4187-R
5074-N
5074-R
5075-R
5076-O
5076-Y
5077-N
5077-R
5078-Y
5079-N
5079-R
5080-RN

Attic Shirtings

Blocks fat ¼ each: 5082-K
5082-N
5083-B
5083-N
5084-K
5084-N
5085-N
5086-K
5086-N
5087-K

Blocks fat ⅛ each: 5082-R
5085-B
5087-B

Borders, binding* 1¾ yards 5075-N

Borders, block ⅞ yard 5081-O

Backing** 3¾ yards 5015-N

Cutting Directions

Note: Border measurements are given in the exact lengths required, including ¼" seam allowances. WOF designates the width of fabric from selvedge to selvedge (approximately 42" wide). A fat eighth is a 9" x 21" cut of fabric.

From each of the following fat quarters cut:

5078-R, 5080-R, 5081-R, 5082-K, 5082-N, 5083-B, 5083-N,
5084-K, 5084-N, 5085-N, 5086-K, 5086-N, 5087-K

For pieced blocks, from each fabric cut (3) squares 4⅞" x 4⅞",
(6) squares each 2⅞" x 2⅞", and (6) squares each 2½" x 2½"

From each of the following fat eighths cut:

4187-R, 5074-N, 5074-R, 5075-R, 5076-O, 5076-Y, 5077-N,
5077-R, 5078-Y, 5079-N, 5079-R, 5080-RN, 5082-R, 5085-B,
5087-B

For pieced blocks, from each fabric cut (2) squares 4⅞" x 4⅞",
(4) squares each 2⅞" x 2⅞", and (4) squares each 2½" x 2½"

5081-O, for pieced Flying Geese and 1 pieced block

Cut (72) squares each 3½" x 3½"

Cut (1) square 4⅞" x 4⅞", (2) squares each 2⅞" x 2⅞", and (2) squares each 2½" x 2½"

5075-N, for solid border, pieced Flying Geese, and binding

Cut (2) border strips 3½" x 54½" along the length of the fabric

Cut (2) border strips 3½" x 48½" along the length of the fabric

Cut (5) binding strips 2¼" x 54½" along the length of the fabric

Cut (36) rectangles 3½" x 6½"

Cut (4) squares 3½" x 3½"

5015-N, additional fabric required for backing

Cut (2) panels 64" x WOF. Piece to make quilt backing 64" x 64"

Extra Spicy Quilt

Making the pieced blocks

1. Choose (1) $4\frac{7}{8}$ " x $4\frac{7}{8}$ " square, (2) $2\frac{7}{8}$ " x $2\frac{7}{8}$ " squares, and (2) $2\frac{1}{2}$ " x $2\frac{1}{2}$ " squares from a light fabric and a dark fabric. Referring to Diagram 1, layer the $4\frac{7}{8}$ " x $4\frac{7}{8}$ " light square right sides together with the same size dark square. Draw a diagonal line from corner to corner on the back of the light square. Sew $\frac{1}{4}$ " away from the drawn line on both sides. Cut on the line to make 2 large half-square triangle units. Press the units open.
2. Repeat with the $2\frac{7}{8}$ " x $2\frac{7}{8}$ " squares to make 4 small half-square triangle units.

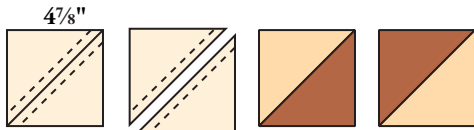


Diagram 1

3. Referring Diagram 2 for block piecing and paying careful attention to the orientation of the elements, join 2 small half-square triangle units with a dark $2\frac{1}{2}$ " x $2\frac{1}{2}$ " square and a light $2\frac{1}{2}$ " x $2\frac{1}{2}$ " square. Repeat.
4. Again referring to the block piecing diagram, join these squares and the large half-square triangles to make a block. Press. Make 36 blocks.

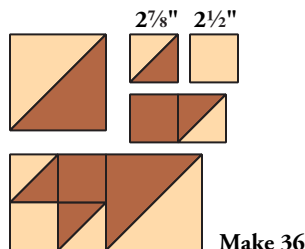


Diagram 2

Making the quilt center

5. Referring to the quilt assembly diagram, arrange the pieced blocks in 6 rows of 6. Be sure each block is oriented correctly.
6. Join the blocks into rows. Press the seam allowances for each row in opposite directions. Matching seams and ends, join the rows. Press the seam allowance.

Adding the inner borders

7. Matching centers and ends, join the shorter 5075-N borders to the sides of the quilt. Press the borders away from the quilt. Similarly, sew the longer borders to the top and bottom of the quilt. Press.

Making the Flying Geese borders

8. Referring to Diagram 3, align a 5081-O $3\frac{1}{2}$ " x $3\frac{1}{2}$ " square right sides together with the end of a $3\frac{1}{2}$ " x $6\frac{1}{2}$ " 5075-N rectangle. Draw a line on the square from corner to corner as shown. Stitch on the drawn line and trim excess fabric, leaving $\frac{1}{4}$ " seam allowance. Press the triangle open. Repeat for the other end of the rectangle. Make 36.
9. Referring to the partial quilt assembly diagram, join 9 Flying Geese to make a border. Repeat to make 4 borders like this.
10. Matching centers and ends, join 2 borders to the sides of the quilt. Press the borders away from the quilt.
11. Sew the remaining $3\frac{1}{2}$ " x $3\frac{1}{2}$ " squares to the ends of the remaining borders. Matching centers, ends, and seams, join these borders to the top and bottom of the quilt. Press the quilt top.

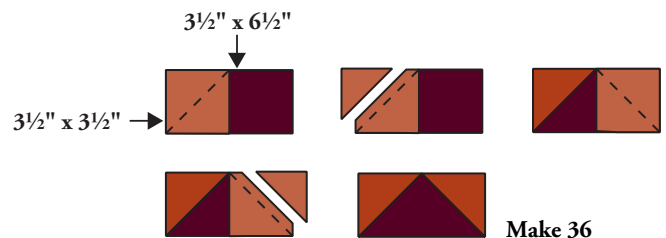
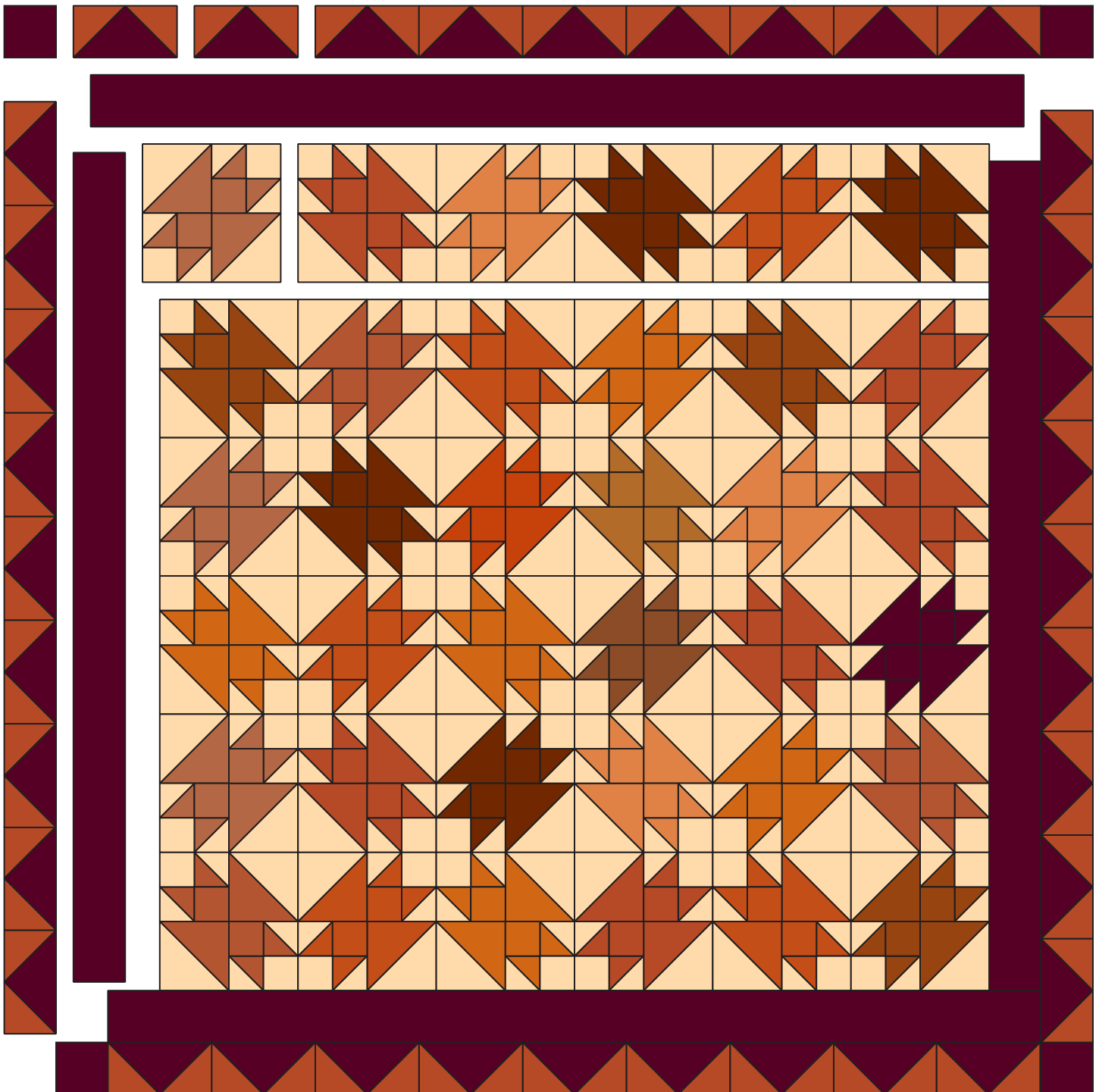


Diagram 3

Finishing

12. Layer the quilt top with batting and backing. Quilt in the ditch of seams and as desired. Bind to finish the quilt.



Quilt Assembly Diagram



makower uk

1384 Broadway
New York, NY 10018
(800) 223-5678
www.andoverfabrics.com

*All fabrics are used
in the quilt pattern.

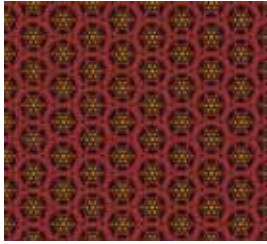
Fabrics shown are
25% of actual size.

Spice Chest

by Jo Morton

Attic Shirtings

by Jo Morton



4187-R



5074-N



5074-R



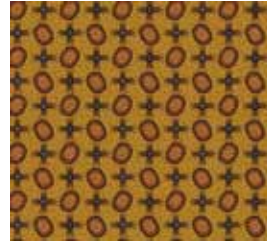
5075-N



5075-R



5076-O



5076-Y



5077-N



5077-R



5078-N



5078-Y



5079-N



5079-R



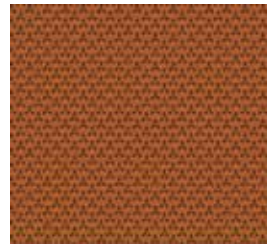
5080-R



5080-R



5051-N



5081-O



5081-R



5082-K



5082-N



5082-R



5083-B



5083-N



5084-K



5084-N



5085-B



5085-N



5086-K



5086-N



5087-B



5087-K